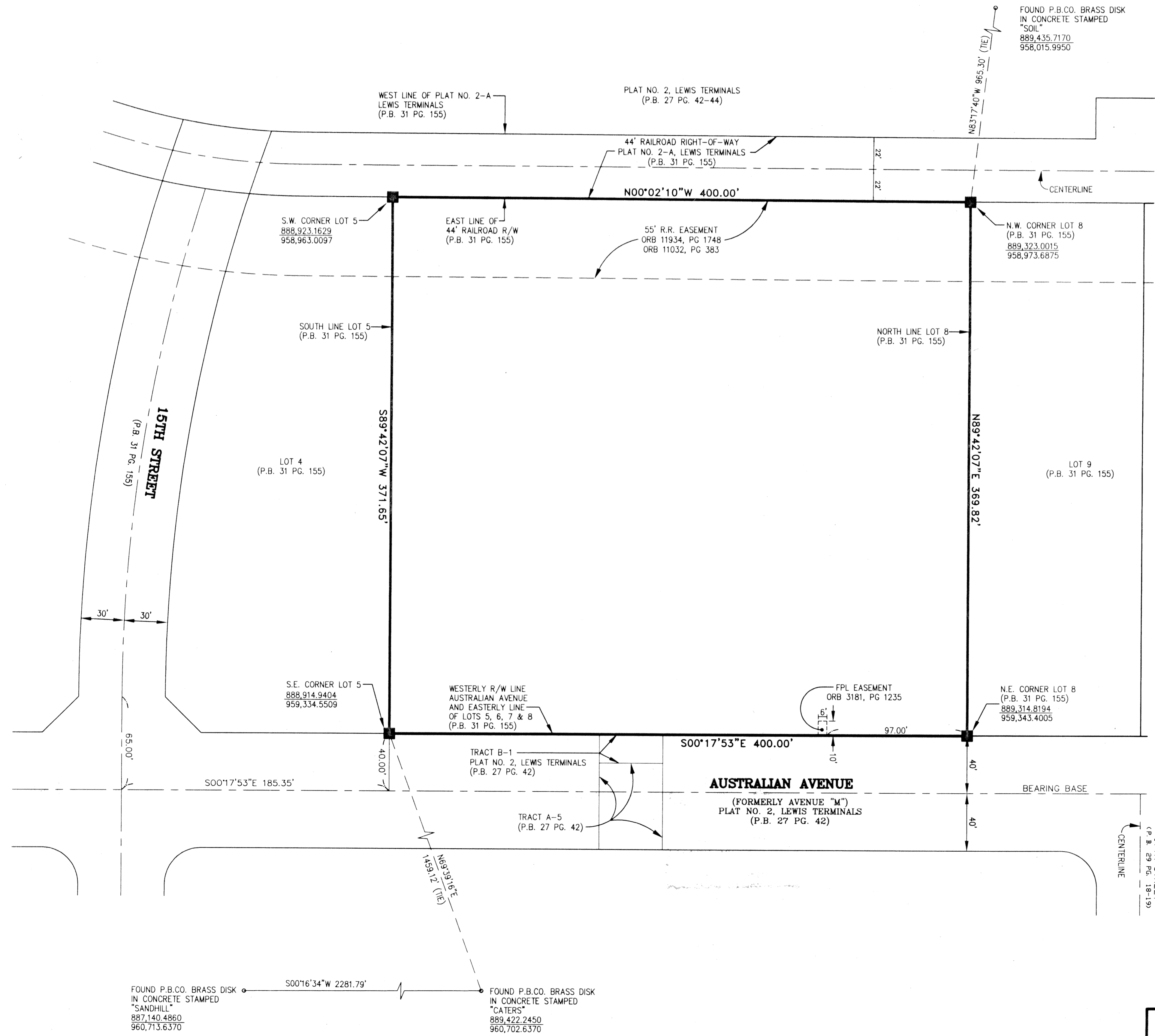
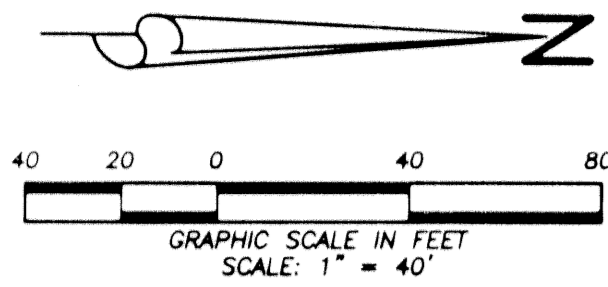


# ON-SITE MATERIALS

BEING A REPLAT OF LOTS 5, 6, 7 AND 8, OF PLAT NO. 2-A, LEWIS TERMINALS,  
 ACCORDING TO THE PLAT THEREOF, AS RECORDED IN PLAT BOOK 31, PAGES 155-156,  
 PUBLIC RECORDS OF PALM BEACH COUNTY, FLORIDA.  
 LYING IN SECTION 32, TOWNSHIP 42 SOUTH, RANGE 43 EAST  
 CITY OF RIVIERA BEACH, PALM BEACH COUNTY, FLORIDA  
 SEPTEMBER 2001 SHEET 2 OF 2



**ABBREVIATIONS:**

- FND. = FOUND
- PG. = PAGE(S)
- MON = MONUMENT
- DB = DEED BOOK
- P.B. = PLAT BOOK
- C/L = CENTERLINE
- R/W = RIGHT-OF-WAY
- U.E. = UTILITY EASEMENT
- LB = LICENSE BUSINESS
- O.R.B. = OFFICIAL RECORD BOOK
- L.A.E. = LIMITED ACCESS EASEMENT
- P.R.M. = PERMANENT REFERENCE MONUMENT
- = SET 4" X 4" CONCRETE MONUMENT "PRM LB 4431"

<p><b>LIDBERG LAND SURVEYING, INC.</b>                  675 West Indiantown Road, Suite 200,                  Jupiter, Florida 33458 TEL. 561-746-8454</p>	CAD K:\AUTOCAD\01-078\001-078P.DWG		
	REF K:\AUTOCAD\		
	FLD B.D.	356 361	07 09
	OFF MKH		
CKD D.C.L.	SHEET 2 OF 2	JOB 01-078-306	DATE 07/07/01
		DWG D01-078P	